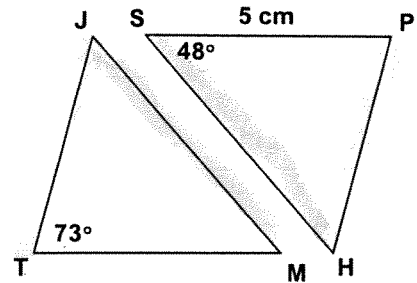
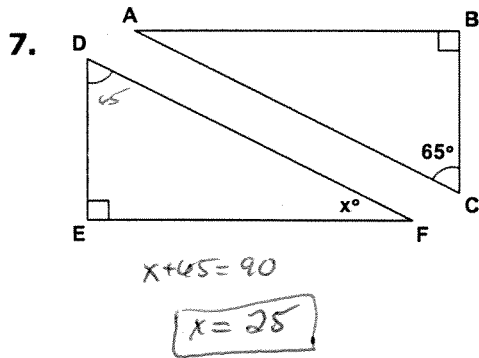


In the diagram, $\triangle TJM \cong \triangle PHS$. Complete the statement.

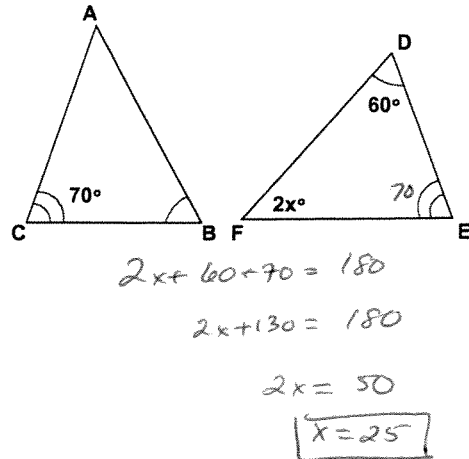
1. $\angle P \cong \underline{\angle T}$
2. $\overline{JM} \cong \underline{\overline{SH}}$
3. $m\angle M = \underline{48}$
4. $m\angle P = \underline{73}$
5. $MT = \underline{5}$
6. $\triangle HPS \cong \underline{\triangle TJM}$



Find the value of x.



8.



Use the given information to find the indicated values.

9. Given $\triangle ABC \cong \triangle DEF$, find the values of x and y.

$$5x + 2 = 87$$

$$5x = 85$$

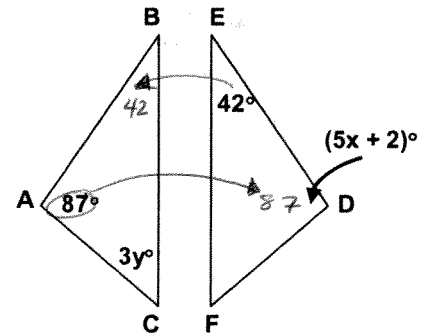
$$x = 17$$

$$3y + 42 + 87 = 180$$

$$3y + 129 = 180$$

$$3y = 51$$

$$y = 17$$



10. Given $\triangle HJK \cong \triangle TRS$, find the values of x and y.

$$51 = 6x - 3$$

$$54 = 6x$$

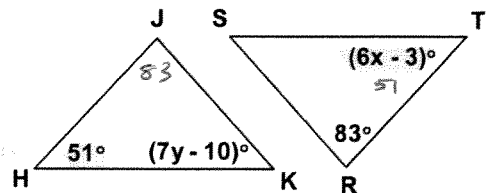
$$9 = x$$

$$83 + 51 + 7y - 10 = 180$$

$$7y + 124 = 180$$

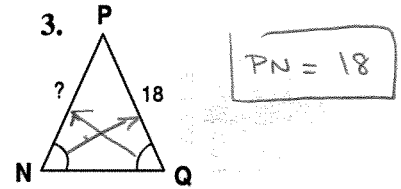
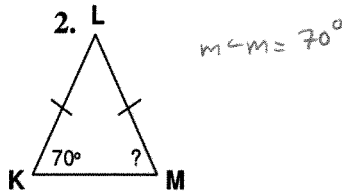
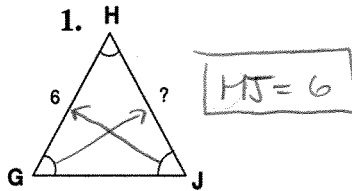
$$7y = 56$$

$$y = 8$$

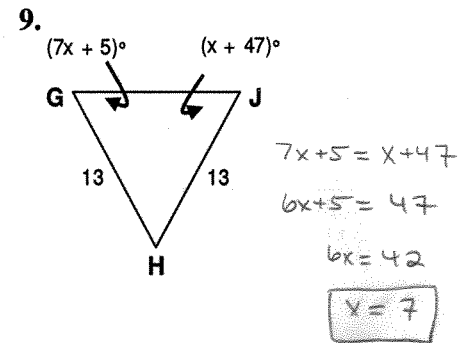
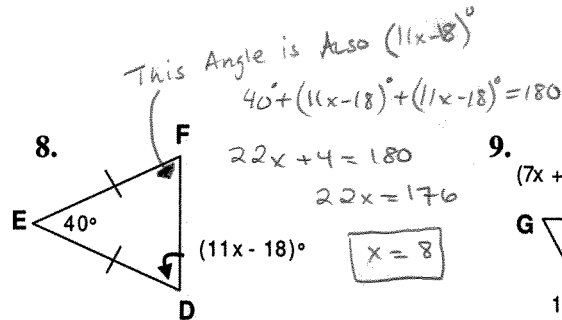
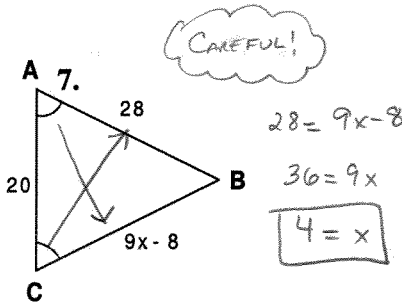
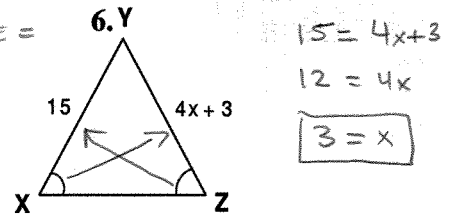
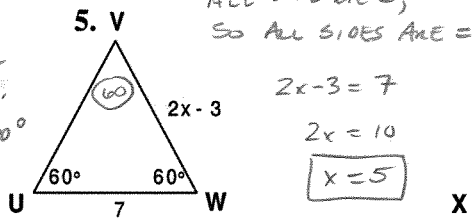
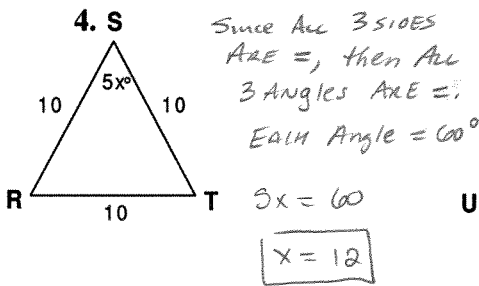


WS - Practice 4.7

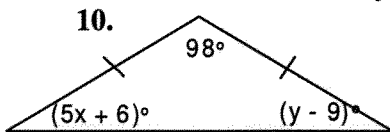
Find the unknown measure.



Find the value of x.



Find the values of x and y.



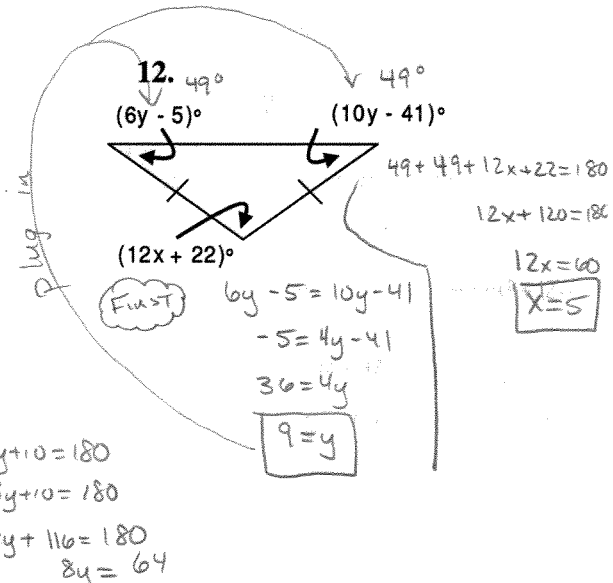
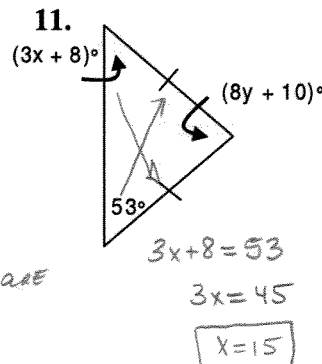
$5x + 6$ is the same as $y - 9$

$180 - 98 = 82$

The angles that are left each are $82 \div 2 \Rightarrow 41$

$5x + 6 = 41$
 $5x = 35$
 $x = 7$

$y - 9 = 41$
 $y = 50$

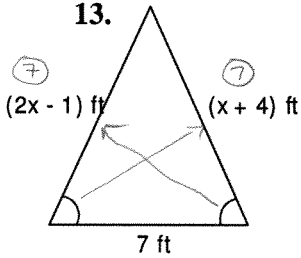


$3x + 8 + 53 + 8y + 10 = 180$
 $53 + 53 + 8y + 10 = 180$
 $8y + 116 = 180$
 $8y = 64$

After you get the value for x , plug back in to find perimeter!

Find the perimeter of the triangle.

13.



$$2x-1 = x+4$$

$$x+1 = 4$$

$$x = 3$$

$$2x+1$$

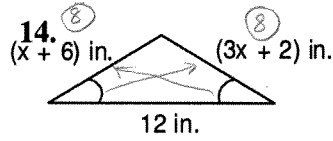
$$2(3)+1$$

$$7$$

$$P = 7+7+7$$

$$P = 21 \text{ ft}$$

14.



$$x+6 = 3x+2$$

$$6 = 2x+2$$

$$4 = 2x$$

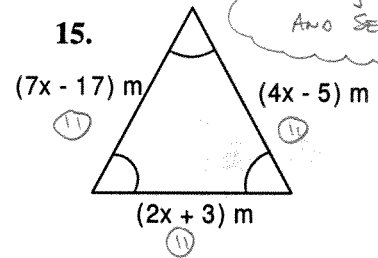
$$2 = x$$

$$P = 8+8+12$$

$$P = 28 \text{ in}$$

Page 11 of 21

15.



Pick Any 2 sides
And SET = !

$$7x-17 = 2x+3$$

$$5x-17 = 3$$

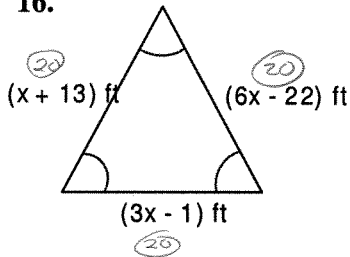
$$5x = 20$$

$$x = 4$$

$$P = 11+11+11$$

$$P = 33 \text{ m}$$

16.



$$x+13 = 6x-22$$

$$13 = 5x-22$$

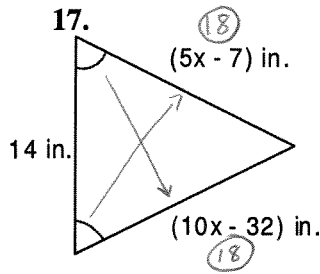
$$35 = 5x$$

$$7 = x$$

$$P = 20+20+20$$

$$P = 60 \text{ ft}$$

17.



$$5x-7 = 10x-32$$

$$-7 = 5x-32$$

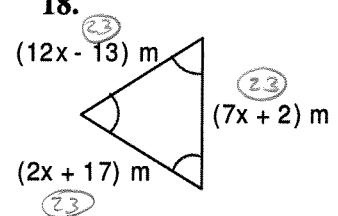
$$25 = x$$

$$5 = x$$

$$P = 14+18+18$$

$$P = 50 \text{ in}$$

18.



$$12x-13 = 2x+17$$

$$10x-13 = 17$$

$$10x = 30$$

$$x = 3$$

$$P = 23+23+23$$

$$P = 69 \text{ m}$$